

# ICOM INSTRUCTIONS

## CLONING SOFTWARE

# CS-F5120DD

- This cloning software is designed to perform data entry, settings, and cloning for the IC-F5122DD/IC-F6122DD VHF/UHF DIGITAL TRANSCEIVERS.
- The CS-F5120DD has a Help file to describe functions and operations.
- The instructions are based on using Microsoft® Windows® 7.

### ■ System requirements

The following PC and cable are required to use the CS-F5120DD.

#### PC

- Microsoft® Windows® 8.1 (32/64 bit)\*
  - Microsoft® Windows® 8 (32/64 bit)\*
  - Microsoft® Windows® 7 (32/64 bit)
  - Microsoft® Windows Vista® (32/64 bit)
- \*Except for "RT" versions of Microsoft® Windows® 8.1 or Microsoft® Windows® 8.
- A USB 1.1 or 2.0 port
  - A CD drive

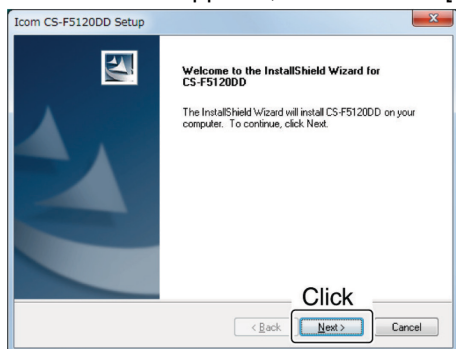
#### Cable (Purchase separately)

- OPC-2218LU DATA COMMUNICATION CABLE

### ■ Software installation

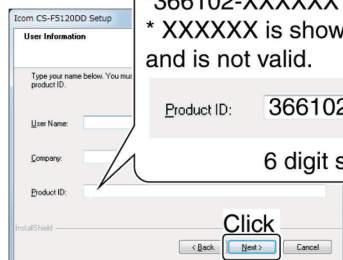
When installing the software, log in as the **administrator**.

1. Make sure Windows has completed its startup, and no other applications are running.
2. Insert the CD into a CD drive.
3. Double-click "setup.exe" contained in the CD.
  - If "User Account Control" appears, click [Yes] to continue.
4. "Welcome to the InstallShield Wizard for CS-F5120DD" appears, and then click [Next>].

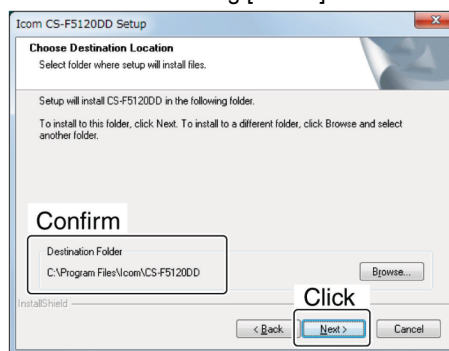


5. "User Information" appears. Type your name, your company name (optional) and the product ID number in the following manner, and then click [Next >].
  - Product ID number: 366102-(6 digit serial number)
  - Please check the serial number on the CD. If you downloaded the software, enter the ID provided by your distributors.

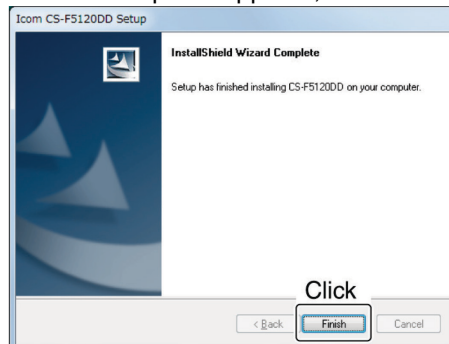
Example:  
When the serial number is XXXXXX\*, enter "366102-XXXXXX" as the ID number.  
\* XXXXXX is shown as an example only, and is not valid.



6. "Choose Destination Location" appears, and then click [Next>].
  - If desired, click [Browse...] to select another destination folder before clicking [Next >].



7. After the installation is completed, "InstallShield Wizard Complete" appears, and then click [Finish].



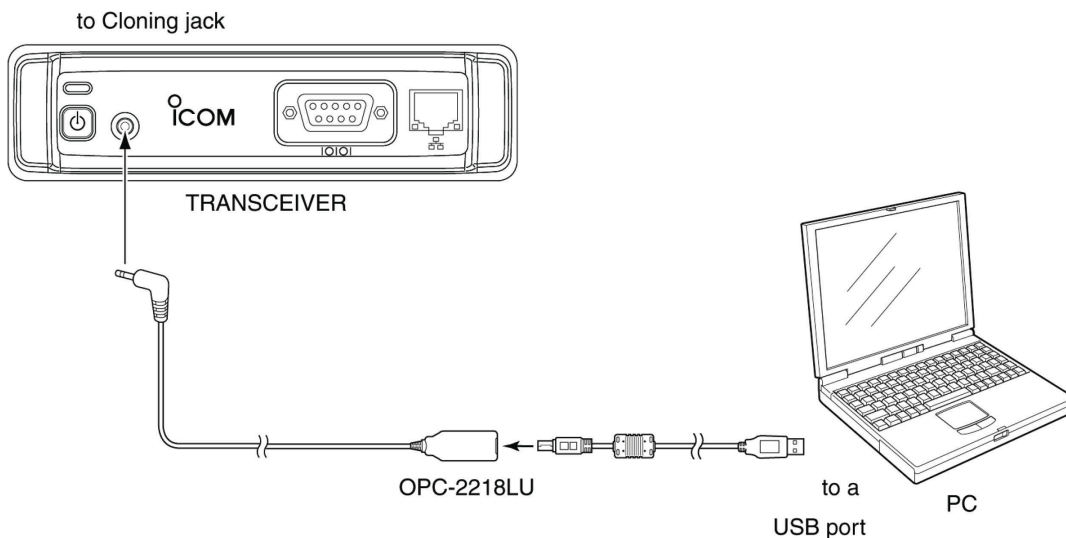
8. Eject the CD.
9. A program group 'CS-F5120DD' appears on the program menu, and the shortcut icon appears on the desktop.
  - You can uninstall the cloning software using "Uninstall a program" in the Windows Control Panel.

## ■ Before connecting the OPC-2218LU to a PC

To use the OPC-2218LU DATA COMMUNICATION CABLE, you must install a USB driver.  
The latest USB driver and installation guide can be downloaded from the Icom website.  
Read the guide carefully before installing the driver.


## ■ Connection

1. Turn OFF the transceiver.
2. Connect the OPC-2218LU cable as illustrated below.
3. Hold down [U] for 5 seconds to turn ON the transceiver in the Cloning mode.



## ■ Programming information

- To prevent data loss, you should first read (download) all the transceiver's data before entering or editing parameters using the cloning software, even when the transceiver is factory fresh.

Click , or [Clone] in the top menu of the cloning software, and then select "Read <- TR" to start downloading.

- While reading or writing cloning data, **NEVER** turn OFF the transceiver or the PC, and **NEVER** disconnect the cable. Otherwise, the data could be lost or corrupted.
- Before editing or entering, make a backup file onto your PC.  
A backup file allows easy restoring if the setting data in the transceiver is accidentally deleted.

Please refer to the cloning software's Help file for assistance with the functions or settings.  
To open the Help file, click [Help] in the top menu of the cloning software and select "Contents," or simply push the [F1] key on the PC's keyboard.

Icom, Icom Inc. and Icom logo are registered trademarks of Icom Incorporated (Japan) in Japan, the United States, the United Kingdom, Germany, France, Spain, Russia, and/or other countries.  
Microsoft, Windows, and Windows Vista are registered trademarks of Microsoft Corporation in the United States and/or other countries.  
All other products or brands are registered trademarks or trademarks of their respective holders.